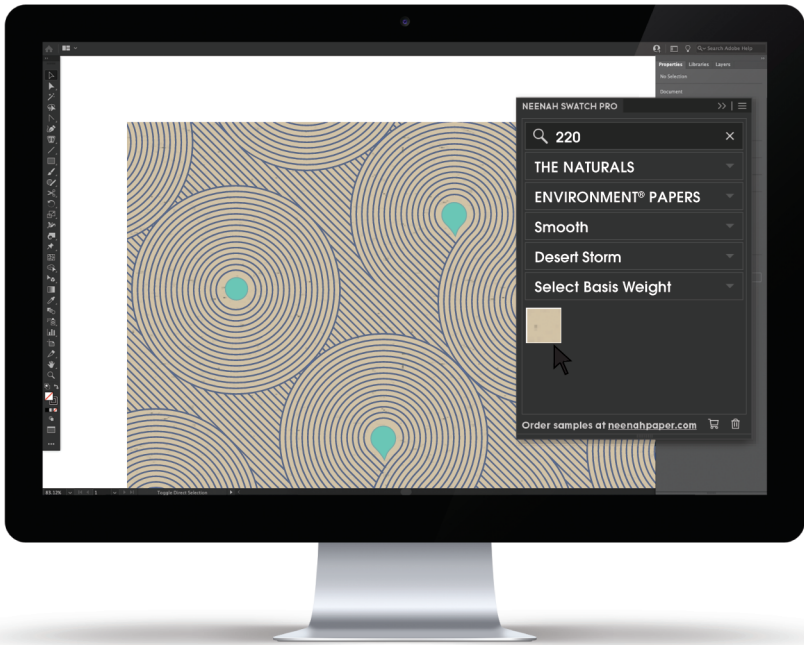


NEENAH SWATCH PRO™



No scanning or simulating required!

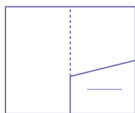
Pull hundreds of colors and textures from Neenah into your artwork with amazing accuracy using the Neenah Swatch Pro™ Adobe extension.

Simply enter the Neenah Swatch Pro™ number or browse our expansive library of colors and textures.

Now Available in Adobe Illustrator,®
InDesign,® and Photoshop.®

[NEENAH PAPER.COM/SWATCHPRO](https://neenahpaper.com/swatchpro)

PRODUCTION NOTES



FOLDER | Embrace

CLASSIC® Stipple Double Thick Cover **SOLAR WHITE 130DTC** (352 gsm) **16pt** | FSC® C011397
Neenah Swatch Pro™ #113

Outside: Black + Custom Ink "Very Peri" + Overall Satin Aqueous Coating + Great Western Foil MS167 (Aqua) + Registered Emboss + Die-cut and Score + Tape and Fold
Inside: Custom Ink "Very Peri" + Overall Satin Aqueous Coating

GIFT CARD FOLDER | Rekindling Gratitude

Holder: CLASSIC CREST® Duplex Cover **EPIC BLACK ® / SOLAR WHITE 120DC** (324 gsm) **14pt**
Smooth/Smooth | FSC® C011397

Neenah Swatch Pro™ #801 / #109

Outside: PANTONE® 877 (Metallic Silver) + Dry Trap Overall Satin Varnish (both sides) + Kurz Luxor Foil MTC356 (Purple) + Blind Emboss + Die-cut and Score + Tape and Fold + 3M Low Profile Dual Lock Coin

Note: ASTROBRIGHTS® Text **VENUS VIOLET™ 60T** (89 gsm) **4.8pt** Smooth | FSC® C011397
Fold + Tip-On Inside of Card Holder

Gift Card: NEENAH IMAGEMAX® Paper Card **WHITE ® 28pt** (711.2 microns) **254C** (687 gsm) Silk | FSC® C011397

Front: UV Custom Ink "Very Peri" + Overall Matte Coating + Spot UV Coating + General Roll Leaf Foil MG1900 (Black)

Back: Black + Silver Scratch-off Foil + Punch Press Cutting



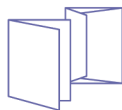
GREETING CARD | Unexpected Hello's

Card: ENVIRONMENT® Double Thick Cover **DESERT STORM ® 130DTC** (352 gsm) **16pt** Smooth | FSC® C011397

Neenah Swatch Pro™ #220

Outside: Custom Ink "Very Peri" + Great Western Foil MS167 (Aqua) + Score + Fold

Envelope: ASTROBRIGHTS® A7 Envelope **VENUS VIOLET™ 60T** (89 gsm) Smooth | FSC® C011397
Flap: Custom Ink "Very Peri"



NOTE CARD | Joyous Attitude

Card: NEENAH® Cotton **FLUORESCENT WHITE 90C** (243 gsm) **17.5pt** Letterpress
Neenah Swatch Pro™ #148

Front: Custom Ink "Very Peri" Printed Letterpress

Back: Custom Ink "Very Peri" Printed Offset

Envelope: ROYAL SUNDANCE® 5½ Baronial Envelope **BIRCH ® 80T** (118 gsm) Fiber | FSC® C011397
Neenah Swatch Pro™ #222

Flap: Custom Ink "Very Peri"

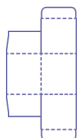


GIFT BOX | Reflect & Collect

NEENAH® Folding Board **100 PC WHITE ® 18pt 132C** (357 gsm) Matte Double | FSC® C011397
Neenah Swatch Pro™ #173

Outside: Custom Ink "Very Peri" + Dry Trap Overall Satin Varnish + Kurz Luxor Foil MTC351 (Copper) + Die-cut and Score + Tape and Fold

Inside: Custom Ink "Very Peri" + Dry Trap Overall Satin Varnish



DESIGN & PRODUCTION

Creative and Design: In-House Neenah Design Solutions, Alpharetta, GA

Printing: Fey Printing, Wisconsin Rapids, WI

Gift Card Printing: Diamond Graphics, Anoka, MN

For more information on Neenah papers, contact the
Neenah Customer Service Center at 1.800.558.5061

www.neenahpaper.com

*Registered and ™ Trademarks of Neenah, Inc. ©2022 NI. All rights reserved. Printed in U.S.A.

CLASSIC® Techweave Cover **SOLAR WHITE 100C** (270 gsm) **15pt** | FSC® C011397
NEENAH SWATCH PRO™ #114



The mark of
responsible forestry

Please look for
FSC® certified products